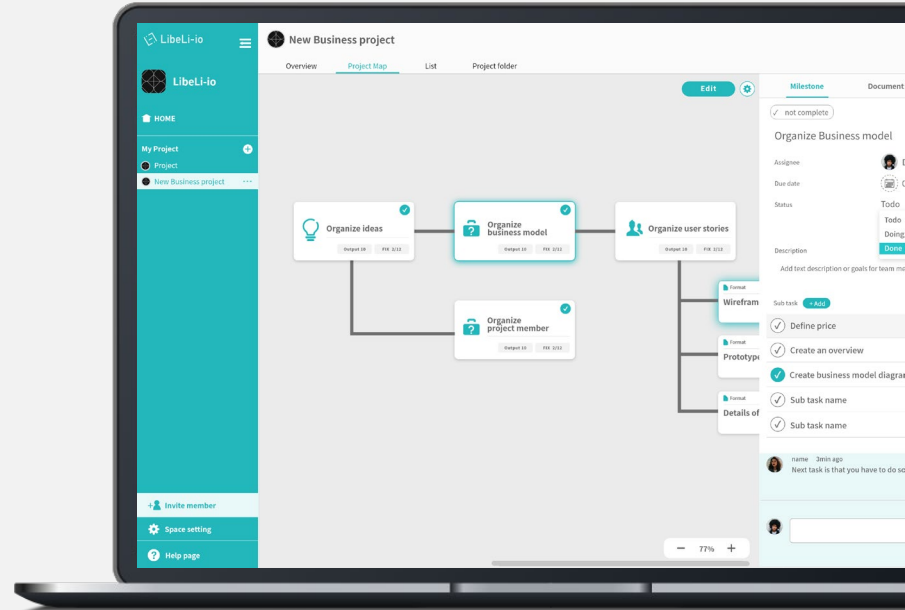




Service Introduction

2022/12

LibeLi-io Inc.



About LibeLi-io

LibeLi-io Inc.

Established on July 21, 2021, under the slogan "More Freedom, More Team," we released "LibeLi-io," a project workspace specialized in promotion, in August 2022, over a year later.

We aim to achieve "sharing and understanding the way forward," "communicating things more clearly," and "collaborating with more flexible ideas." With the idea of "structuring propulsion and resolving challenges in propulsion," we will continue to provide our services globally.



CEO : Kim SungSu

Born in Yamaguchi Prefecture, Japan, SungSu worked for an IT company in South Korea after studying at an Australian university for a year.

After four years in Korea, he returned to Japan. He worked as a programmer and SE at a Sler company, developing airline systems for a major airline industry and factory line systems.

After that, he worked as a project manager and did organizational management for entertainment companies such as NHNJapan and SEGA. He was responsible for launching the overseas business development unit and leading the overseas business.

Based on his 18 years of development experience, he launched the concept of LibeLi-io in early 2020 and established the current LibeLi-io in July 2021.



A project workspace specializing in "PROPULSION" rather than "management."

We provide all the functionality you need to drive your business and projects forward.

➤ "Project Map Function" to align how to proceed.

➤ "Sub-task function" for making work more detailed.

➤ "Formatting function" to create outputs

Wire frame

Mind Map

➤ "Storage function "for centralized management of local files as well.

Sheet

PDF

Video

URL Link

➤ Template function and process standardization function

Web application with no download required.

Available now with a perpetual free plan.

Our Business Record



THEHUB



SUTRIX SOLUTIONS

Bizlink



Some of the companies that have permitted us to use their logos

Proactive global expansion

LibeLi-io is used in a variety of operations and projects **throughout Asia**



DX
Promotion
Project

Web
Design
Direction

Architectur
al Design
Promotion

New
Business
Projects

HR
Strategy
Project

Sales
Strategy
Promotio
ns

Consulti
ng

Developm
ent of
human
resources
to
promote

Media Coverage

LibeLi-io was featured in various well-known media including Yahoo! News

Yahoo! News (Featured twice)



Asahi Shinbun



TECHABLE



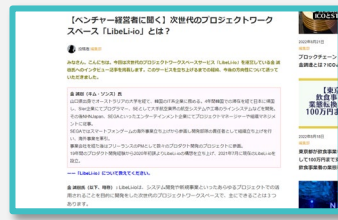
Sogyo Techo



ASCII Lightning Talk



DX Johokan



ASCII STARTUP

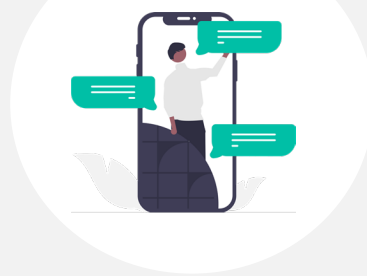


Various issues related to the promotion

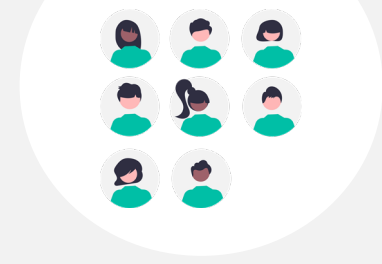
Discrepancies in goals
and how to proceed



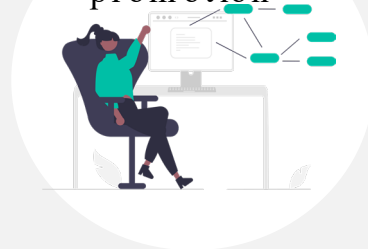
Generalization of
Promotion



Lack of human
resources to promote



Lack of
structuring for
promotion



Hard to develop
human resources to
promote



"Promotion" Libeli-io provides

All team members always understand, are aware of, and share the path to the goal.
We can work smoothly and achieve our objectives.

Share "how to proceed"



By sharing and visualizing how to proceed with a project throughout the team, we can accelerate the goal and improve the quality of achieving our objectives.

Structuring of Promotion



Structuring the promotion means laying the foundation for all operations. It can guarantee reproducibility to achieve objectives and promote operations and projects to a higher degree.

Centralize everything



By managing the various information and outputs that occur when promoting operations and projects in a "single place," we can reduce person-hours spent on management and prevent omissions from being shared.

Various issues related to promotion (Questionnaire results)

Internal Communication Issues

- 1st: Unification of awareness toward the direction to pursue
- 2nd: Prompt information sharing
- 3rd: Maintain and improve motivation

Challenges in Business

Promotion

- 1st: Business knowledge is outsourced.
- 2nd: Too busy to train employees.
- 3rd: How to motivate employees

Human Resource Issues

- 1st: Lack of human resources to promote
- 2nd: Lack of personnel who understand IT knowledge
- 3rd: Lack of engineers

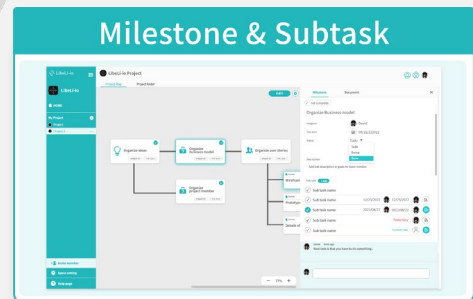
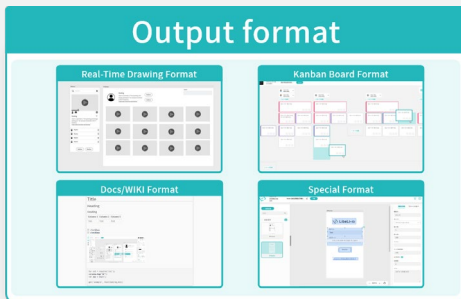
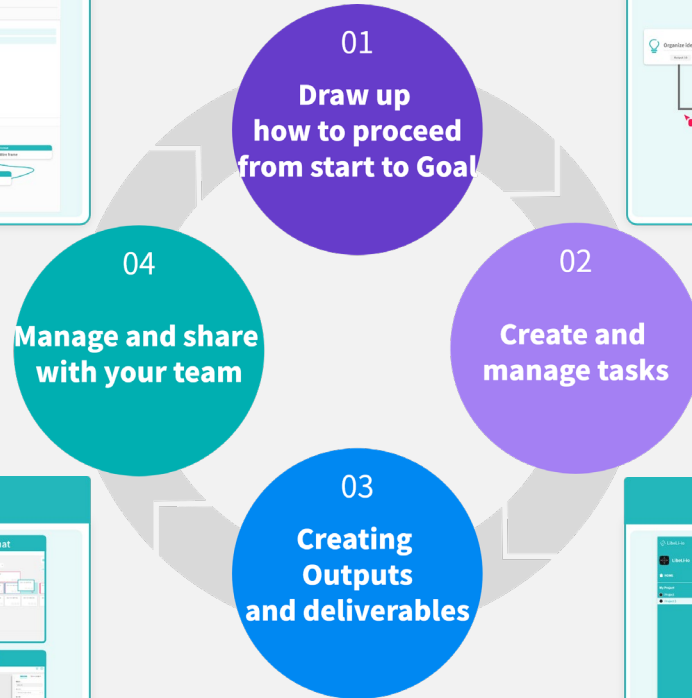
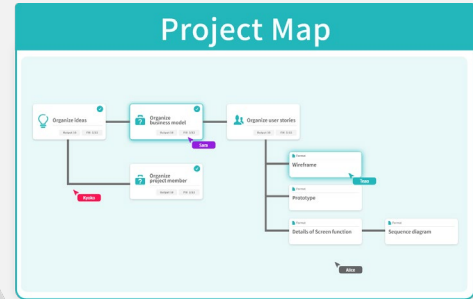
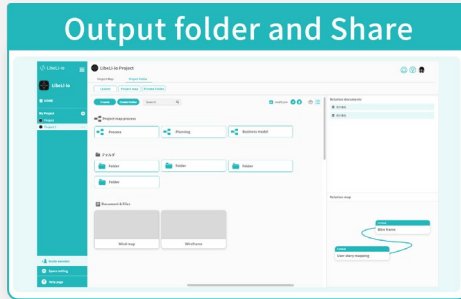
Internal and work environment challenges

- 1st: Vision is not clear.
- 2nd: There is no defined way of working.
- 3rd: Working on multiple assignments at once

Training Challenges

- 1st: Difficulty in training personnel to promote
- 2nd: Management skill training
- 3rd: New graduate education is not done well.

Functional structure based on "promotion" rather than "management"

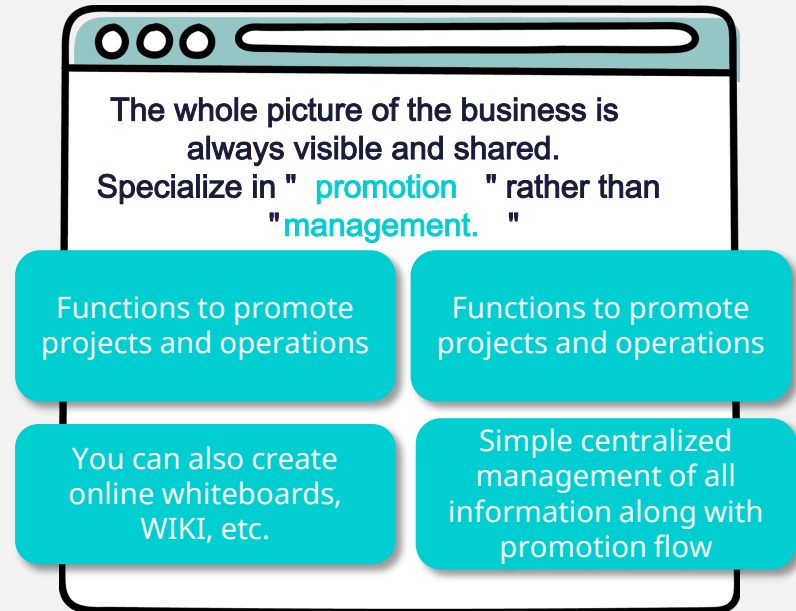
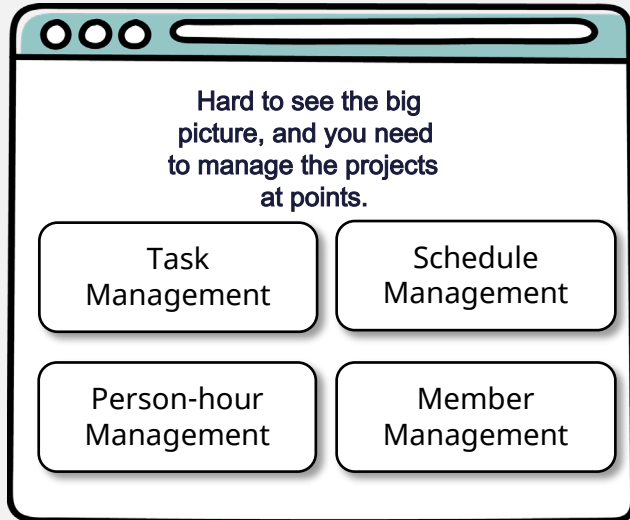


Service for the promotion that could not be accomplished with existing tools

Specialized functions for "promoting team work" that existing management tools were unable to provide.

LibeLi-io

Existing Management Tool

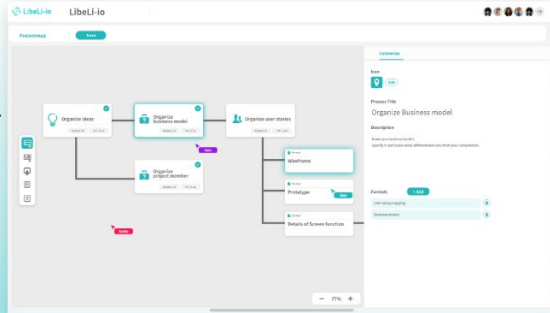


Provides all functions necessary to "promote" operations and projects

Project map

The flow of projects and work can be organized and shared with the team.

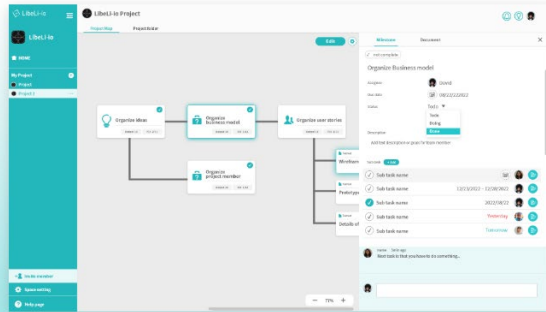
The process can also be used to manage tasks and outputs (deliverables) at the same time.



Milestone&Subtask

You can utilize the processes you have drawn and create milestones/subtasks for each process.

It has all the feature necessary for project promotion, such as assigning members, creating schedules, creating outputs for each task, chatting, etc.



Libeli-io focuses on "promotion," and specializing in "promotion," and provides a user-friendly UIUX that anyone can easily use.

Points

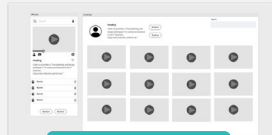
- ✓ Project maps that allow you to draw an unprecedented overall picture of how to proceed and share it with your team
- ✓ Enables promotion and task management with an awareness of the overall picture
- ✓ UIUX structure that is easy for anyone to understand and use
- ✓ Ability to duplicate processes and tasks for easy internal standardization of promotion
- ✓ Automatically centralize all flow, task, and output information.
- ✓ File drive that can also store and manage local files.

Formatting functions for output creation

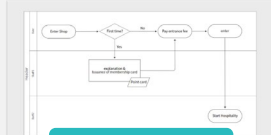
Provides a variety of output creation formats necessary to create outputs (deliverables) in the promotion process.

We also provide Various output creation formats.

Drafting (Online Whiteboard)



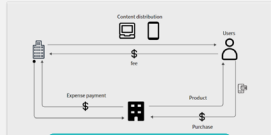
Wire frame



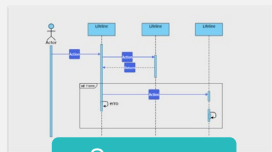
Flow chart



Mind Map



Business model

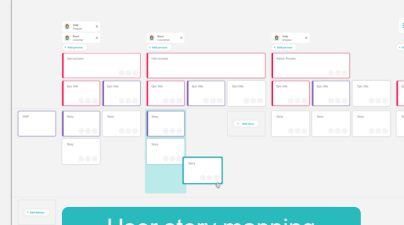


Sequence



ER Diagram

KANBAN board



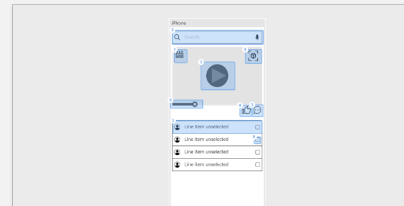
User story mapping

Documents



Docs/Wiki

Special

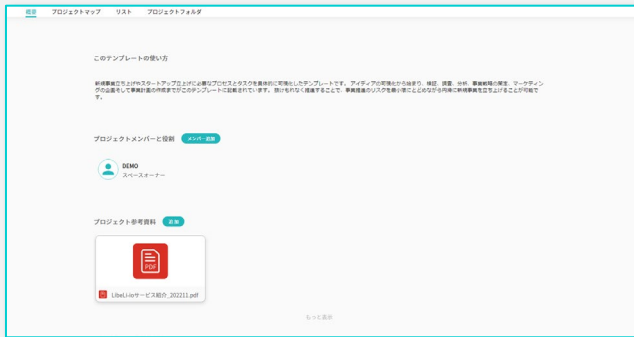


Prototype

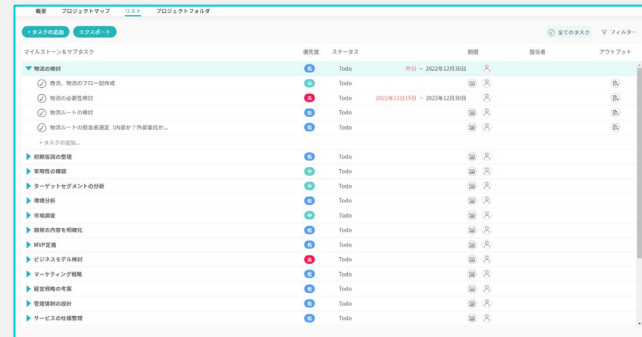
Formats will be added periodically.

Various other valuable functions and view features are also available.

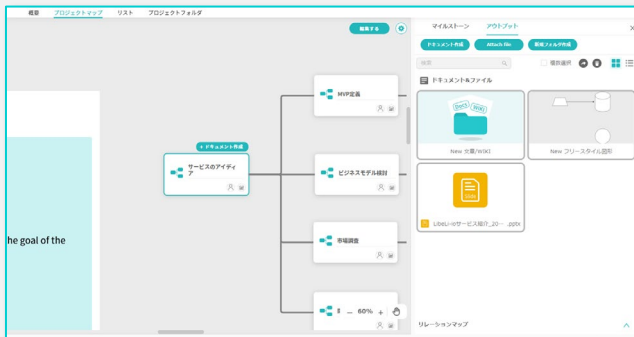
"Overview page" where you can define the overview and member roles.



"List View" for a cross-sectional view of all tasks.



"Output Menu" to manage deliverables by process.

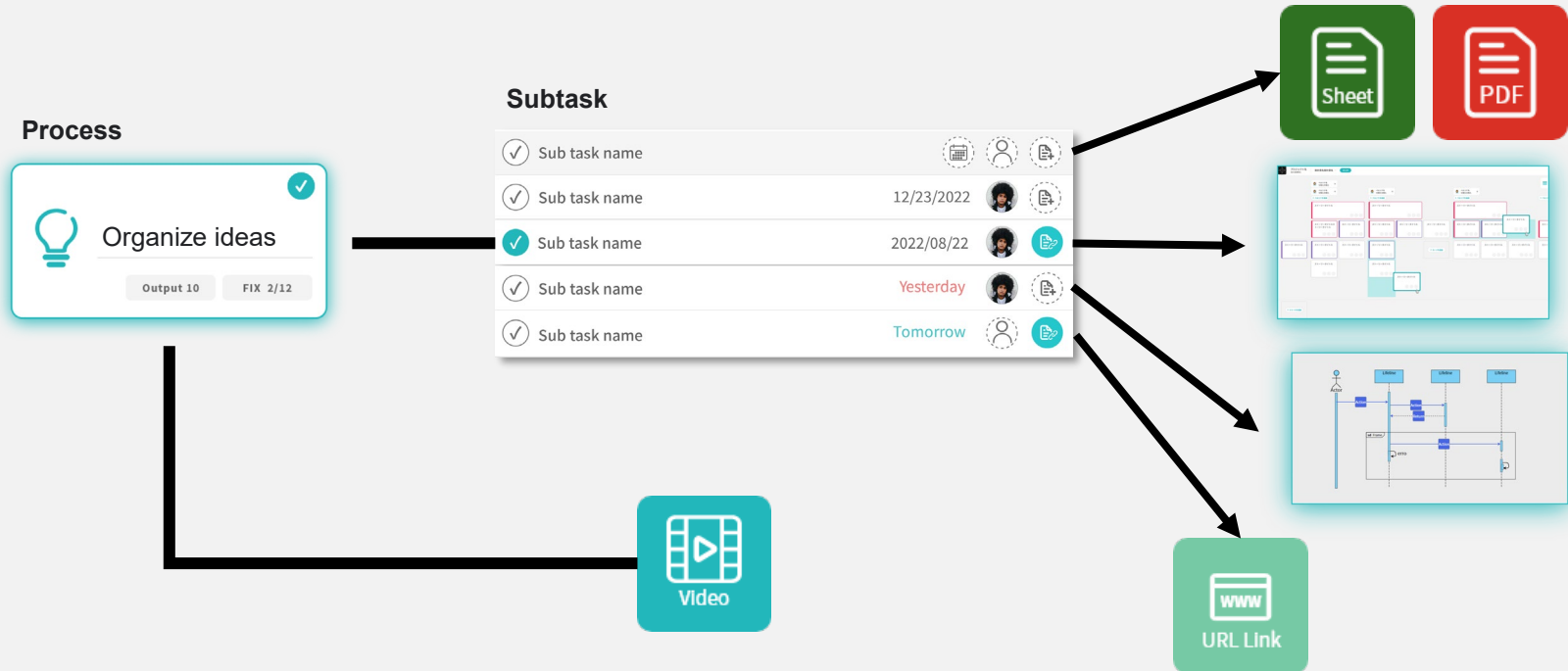


"Project Folder" allows you to view the drawn process in folder format.



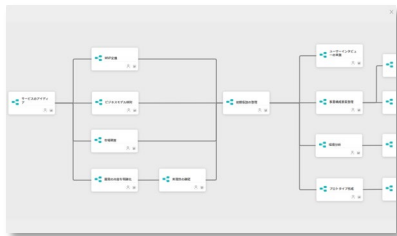
Allows intuitive management of promotion flow, tasks, and all outputs.

“Flow,” “tasks,” and “output/information” are all automatically linked and managed. You can centrally manage various documents and files created locally in the same way.



Ongoing provision of a variety of realistic templates

Accelerate  your business and projects more efficiently with Project Templates.



<Launch a new business>



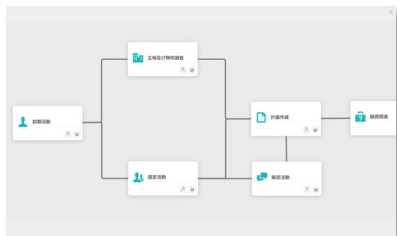
<Establishing a company>



<Startup Science>



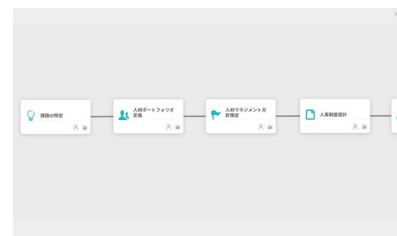
<Funding>



<Opening a restaurant>



<Website Production>



<Human Resources Strategies>

Practical templates that can be used immediately in various industries and occupations



Resolve business promotion issues immediately 

"LibeLi-io" has evolved to be even easier to use.

Continuously provide a variety of realistic templates.

You can freely utilize or customize processes and **task templates** used in various projects and operations to promote business operations.

Development
Process

New Business
Launch Process

Sales Activity
Process

Restaurant
Opening Process

Waterfall Process

Startup Science
Process

DX Organization
Launch Process

The Company
Incorporation
Process

Design Process

Product Planning
and Development
Process

HR Strategy
Process

Funding Process

WEB Production
Process

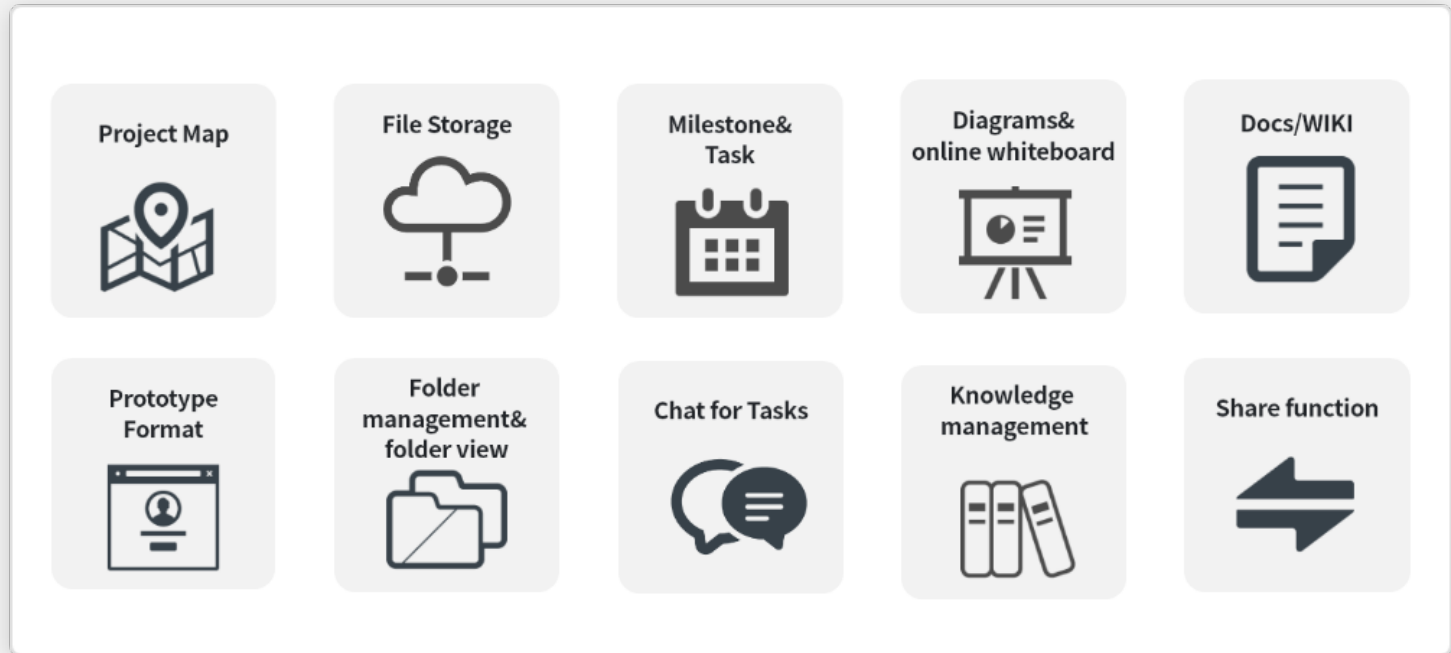
Marketing
Process

Architectural
Design Process

Internal Audit
Process

Summary of LibeLi -io features

LibeLi-io provides **everything you need** to promote your business and projects.



The advantage of LibeLi -io is " Structuring Promotion."

Structuring promotion (making it a process) is the foundation for all operations.

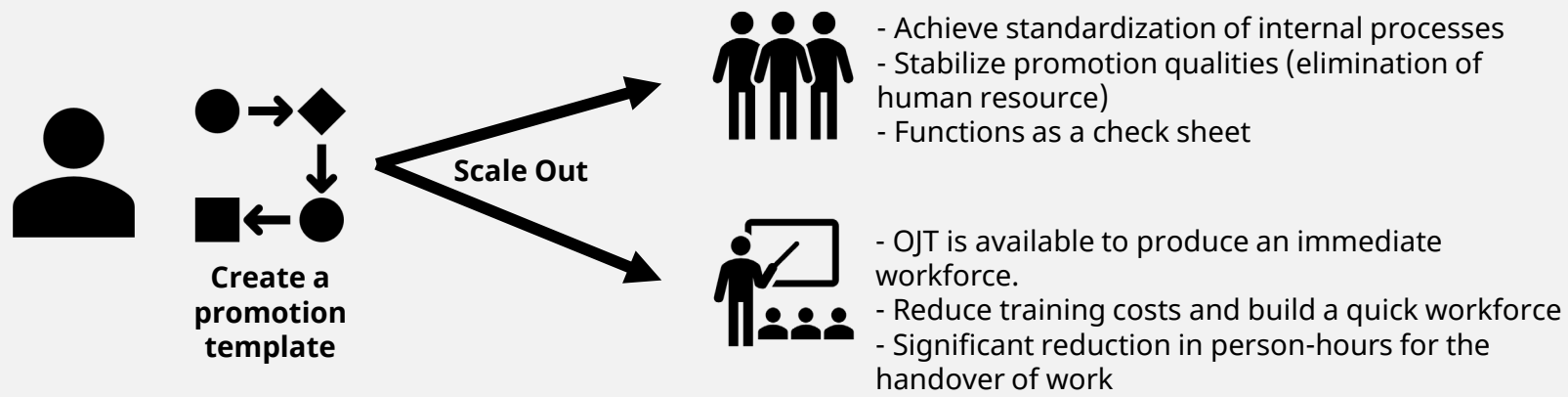
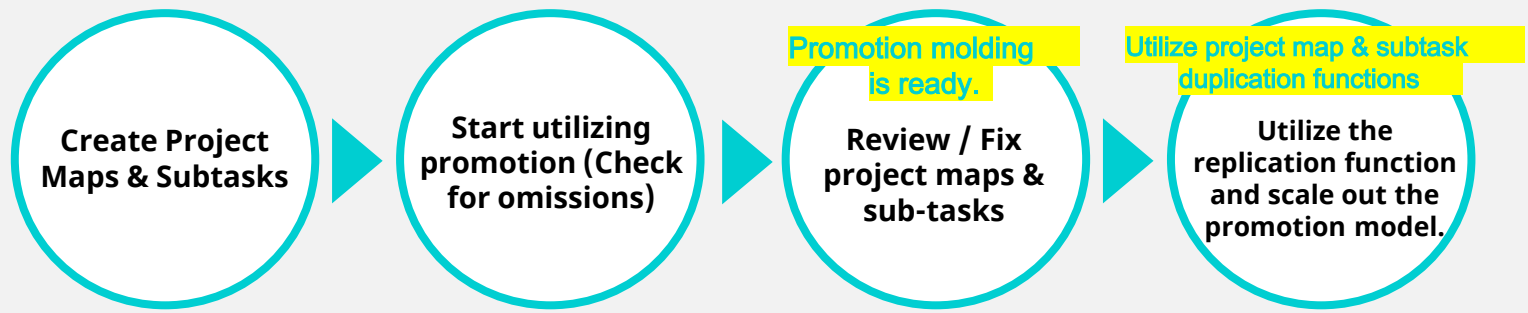
Using Processes, you can

- **Conduct on-the-job training**
- **Create manuals and check sheets**
- **Improve reproducibility to increase the probability of success**
- **Create detailed tasks and manage them appropriately.**
- **Improve the efficiency of business promotion and eliminate personalization.**

You can achieve all of the above through the "structuring of promotion (process)," which enables many tasks to be performed correctly or efficiently.



What is the structuring of promotion using LibeLi -io?



Customer reviews (excerpts)

Leading Entertainment Company (Manager)

- Simple and easy to use (even a newcomer could use it immediately).
 - We were able to build a system to manage projects in parallel.
- "structuring the promotion" significantly contributed to the shortage of human resources to promote.
- We can easily manage all information centrally along with its flow.
 - The system was also introduced for employee training and was influential in training personnel to promote the project.

Sales Representative Company (President)

- We needed to create a system for scaling, and we immediately introduced LibeLi-io at first glance.
- Not only was it possible to create a system, but it became realistic on-the-job training by simply showing it to new employees, enabling them to promote their work spontaneously.

Web production company (President)

- The UI/UX is simple and easy to understand.
- We were able to coordinate with our clients on how to proceed.
- The cost performance is much better than other companies' tools.
- It is a tool that I have never seen before. This is the kind of tool I was looking for.
- We can see multiple projects instead of one per person, which will help us solve human resource issues.

HR Consultant (Consultant)

- This tool has made it possible to provide realistic training on promotion quickly and has helped to establish the concept of promotion.
- Not only promotion, but this tool can also centralize all information at critical points. You can do everything with this tool, leading to cost reductions.

New business consulting and system development company (President)

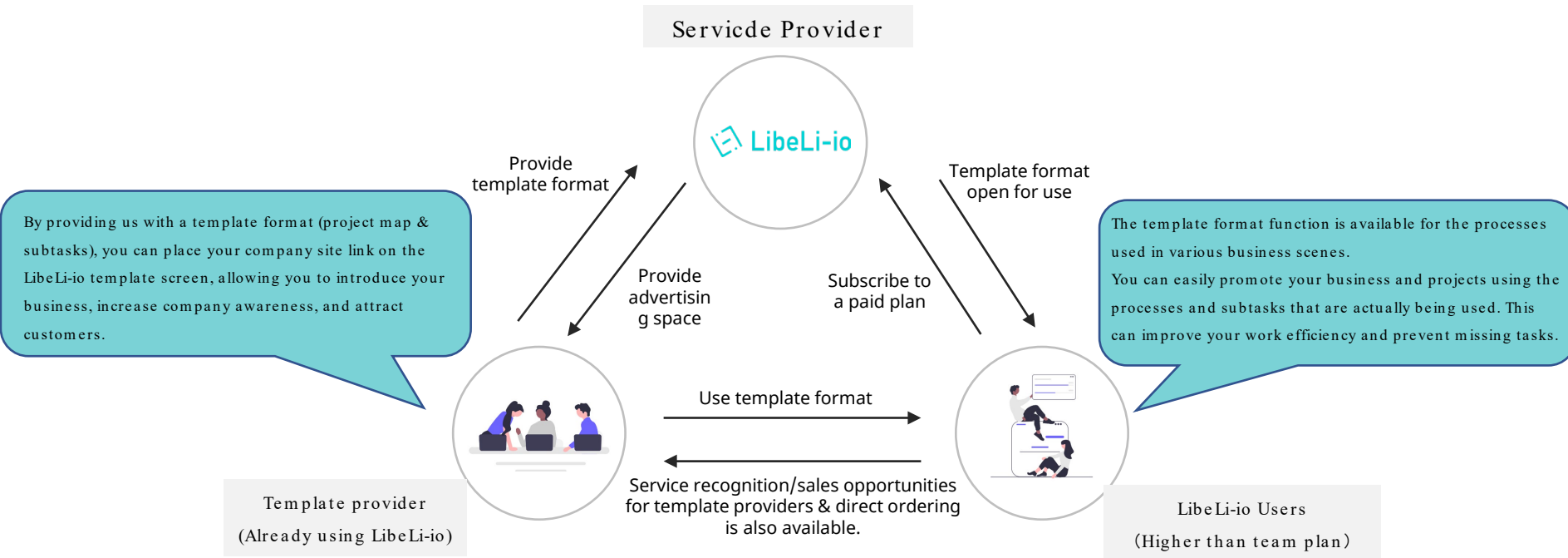
- The project team realized a new way of proceeding with the project, which had never been seen before.
- The entire team is now goal-oriented because the focus is on "promotion" rather than "management."
- The team can now easily direct multiple projects while having a new PM, which is actually structuring the promotion process.

Consulting firm (Consultant)

- The client-side could not get an image of how to proceed when we talked with them before, but now they can understand how to proceed and the project's scope.
- We can constantly understand how to proceed, and we now have an environment in which we can aim for the goal without hesitation.
- The explanation of the project flow and the project's promotion is created as a set, so we were able to get an order and start the project.

New Service: Premium Template Structure

Share knowledge in a way that benefits both template providers and users



New Service: Premium Template Image

You can advertise your company for free while utilizing LibeLi-io

テンプレートを活用してプロジェクトを簡単に推進

新規事業立ち上げプロセス

新規事業立ち上げやスタートアップ立上げに必要なプロセスとタスクを具体的に可視化したテンプレートです。アイデアの可視化から始まり、検証、調査、分析、事業戦略の策定、マーケティングの企画そして事業計画の作成までがこのテンプレートに記載されています。

プロジェクトマップ サブタスク テンプレートを使う

株式会社LibeLi-io

Display Advertisement space

お問い合わせ

Project maps and tasks provided to users are displayed

サービスのアイディ

ビジネスモデル検討

市場調査

顧客の内容を明確化

実現性の確認

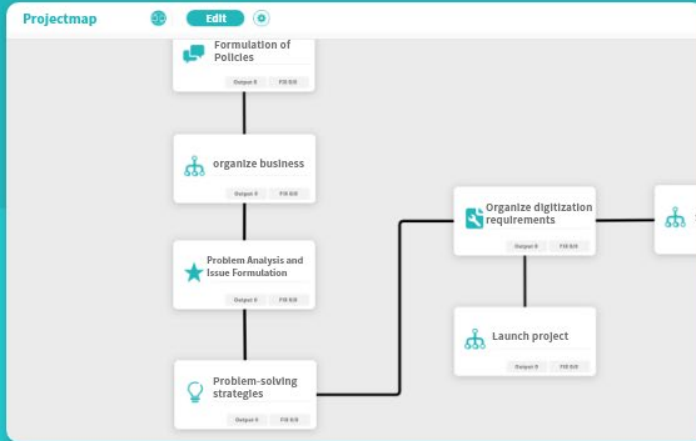
Points

- ✓ Anyone can apply and receive **free advertising space (no brokerage fees)**.
- ✓ You can provide users (paid users) **project maps and task templates** that your company or individuals wish to publish.
- ✓ The "Logo," "Advertising Message," and "Destination URL (**freely specified**)" will be displayed in the advertising frame on the template screen.
- ✓ **Direct matching** of LibeLi-io users with companies and sole proprietors (**no intermediary fees**)
- ✓ The transition destination URL of the "Contact Us" button can be **freely set**.

Examples of Use

Use case ①

DX (digital transformation) promotion project



DX Promotion Process Project Map

The most important part of a DX project is to clarify the objectives, clarify the path to the goal, and reach a consensus with all stakeholders. Without clarity on "how to proceed" and "what work needs to be done," it will be very difficult to reach agreement and consensus among all stakeholders involved. It is very difficult to obtain the agreement of all relevant stakeholders and to proceed with the project without clearly defining "how to proceed" and "what work is needed. Even if these are clarified, the risk of project failure will not be mitigated and will continue to increase as long as these perceptions are not shared.

You can share the necessary DX process with all stakeholders and keep them in line with the project with LibeLi-io's project map.



freestyle format



User story mapping

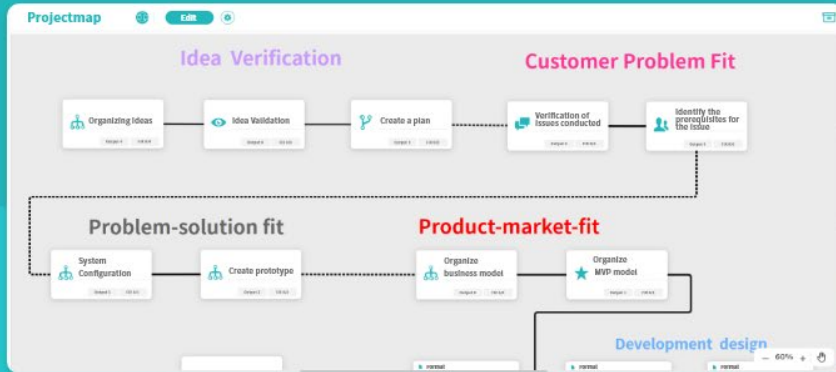


Docs/WIKI format

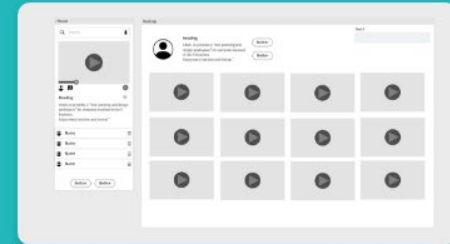
Examples of Use

Use case②

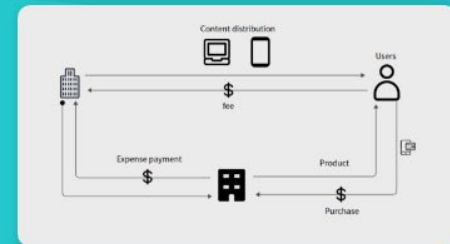
New business/Startup launch promotion project



New business/Startup launch promotion process project map



Wireframe format



Business model diagram format

When starting a new business or startup, it is important not only to conduct market research and needs assessment, but also to organize a system for new business creation within the company or team.

How should we proceed to avoid unnecessary costs? It is necessary to consider how to proceed in the shortest possible way to meet the needs of users.

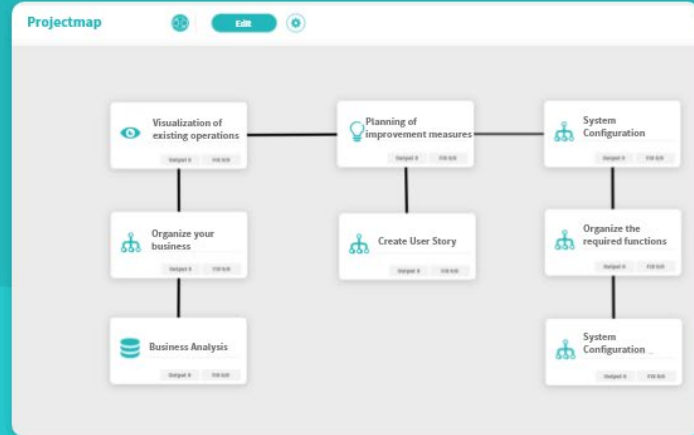
The image on the project map shows a process that has been developed by customizing the startup science process to fit your team and environment.

By using LibeLi-io in this way, you can ensure that your team has the shortest possible route to product development, and you can use it to align your team and promote your project.

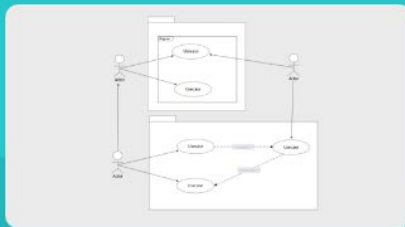
Examples of Use

Use case③ Business improvement project

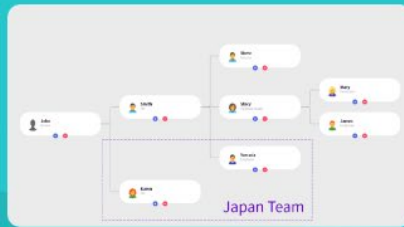
Improving operations is one of the most essential initiatives to increase productivity. The situation of any company or team is always changing day by day, and there is always room for review. In business improvement, it is important to "visualize the current situation," "identify issues," and "provide solutions to the issues." LibeLi-io can define how to proceed (=process) by using a project map. LibeLi-io can also be used very effectively in business improvement projects, such as visualization and inventory of on-site operations using concrete business flow diagrams, and presentation of improvement measures for the visualized processes using user storyboards.



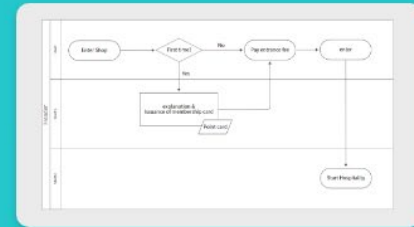
Business Improvement project process Project map



Use case diagram format



Organizational structure chart format

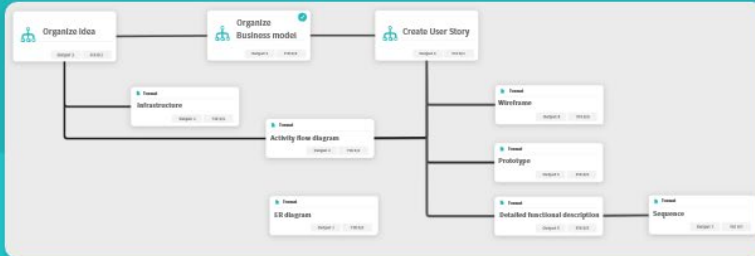


Business flow/activity diagram format

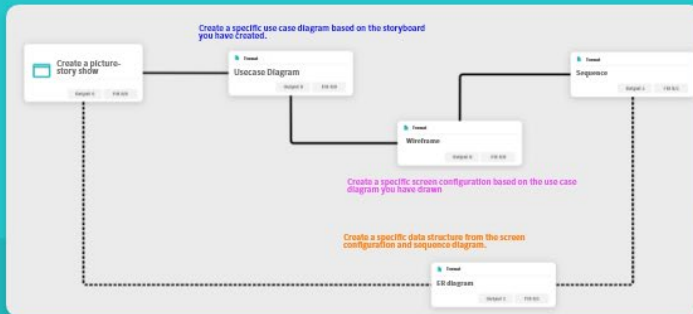
Examples of Use

Use case ④

PM training/education



General development process project map



Process project map driven by use cases

The shortage of project managers (PM) has been a major issue for many years, and "PM training" has become one of the most important strategies for companies.

PM training is extremely difficult, and even after such training, the actual application of the training in the field is also very challenging and difficult.

In LibeLi-io, the actual project process at the actual site is incorporated and the flow of the process is promoted in an on-the-job training format, making it possible to learn realistic project promotion while understanding the overall flow of the project. By specifying the documents to be output for each created process and proceeding accordingly, it is possible to learn more realistic project promotion.

In addition, by sharing the process throughout the company, it is possible to standardize the process and promotion method, and maintain a constant quality of project promotion.

We hope you will utilize LibeLi-io as a place for more realistic education.

Price List

Free

Plans for individuals and teams to start LibeLi-io with unlimited members

\$0.00 / month
(annual contract)

\$0/month (monthly contract)

- All format can be used

Drawing format Docs / Wiki Proto type

User story mapping

- 15 editable documents
- 1 project
- Mile Stone/Subtask/Chat function
- File drive/Storage
- Regular Template
- Real-time co-editing of diagrams
- Output relation function
- Project map
- Simple folder / Team folder
- Unlimited member

Team

Plans for teams with management capabilities and an unlimited number of documents

\$10.40 / month
(annual contract)

\$13/month (monthly contract)

- All format can be used

Drawing format Docs / Wiki Proto type

User story mapping

- Unlimited editable documents
- 100 projects
- Mile Stone/Subtask/Chat function
- File drive/Storage
- Regular Template
- Custom templates & in-space sharing
- Real-time co-editing of diagrams
- Drawing download function (PNG/JPG/SVG/PDF)
- Output relation function
- Project map
- Simple folder / Team folder
- 2GB storage per user(Storage capacity of entire space increases with number of users)
- Starting from 1 member

Business

Plan for businesses that offers features for more advanced and diverse projects

\$16.00 / month
(annual contract)

\$20/month (monthly contract)


- All Team features, plus

- Unlimited projects
- Simple folder / Private folder
- Ability to change status
- Template for Business Plan
- CSV output of user stories(for Jira, Asana, Redmine)
- Access IP permission function
- 5GB storage per user(Storage capacity of entire space increases with number of users)
- Starting from 1 member

Cost-effectiveness through tool integration

In addition to the only project map (promotion function), LibeLi-io also includes task management, knowledge sharing, and online whiteboarding, and **provides unparalleled cost-effectiveness.**

Low Price & High Cost performance

	 \$16.00 <small>/month(Annual)</small>	Service A \$10.00	Service B \$16.00	Service C \$24.8
Project Map Promotion Functions	✓	—	—	—
Todo/ Task Management	✓	—	—	⊗
Knowledge Sharing/ File Storage	✓	⊗	—	—
Online Whiteboard/ Wiki/Kanban	✓	—	⊗	—

Company Information



Name : Libeli-io Inc.

Head Office Address : Hamamatsucho Daiya Bldg 2F
2-2-15, Hamamatsu-cho, Minato-ku, Tokyo

Representative Director : Kim SungSu

HP : <https://corp.libeli-io.com/>

Service Site : <https://www.libeli-io.com/>

Youtube : <https://youtu.be/mRTFGjIloIo>

Twitter : <https://twitter.com/IoLibeli>